

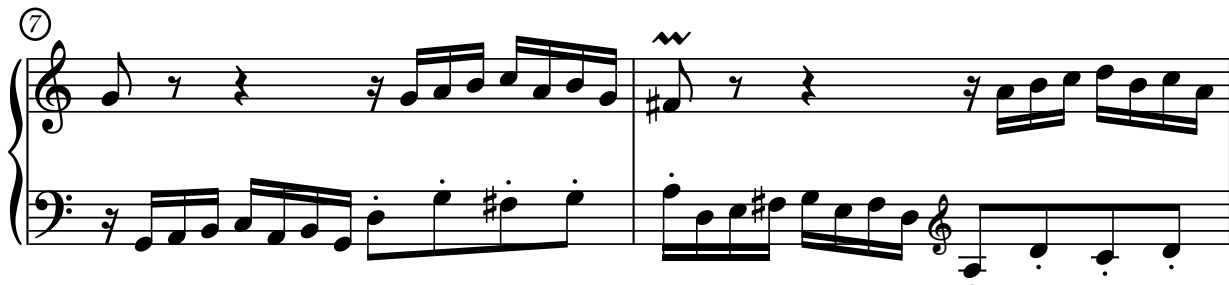
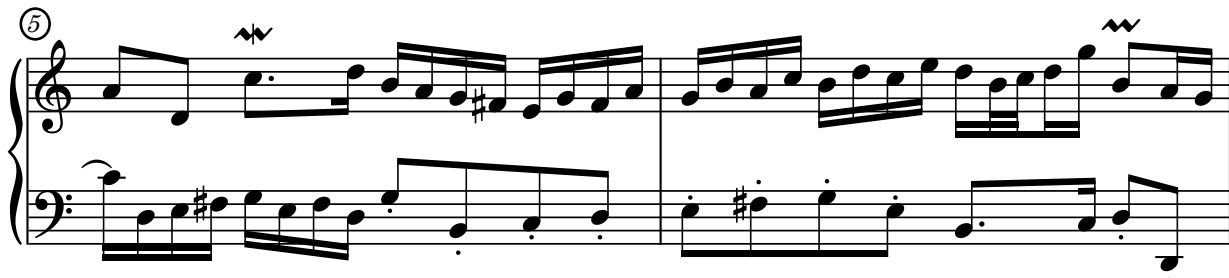
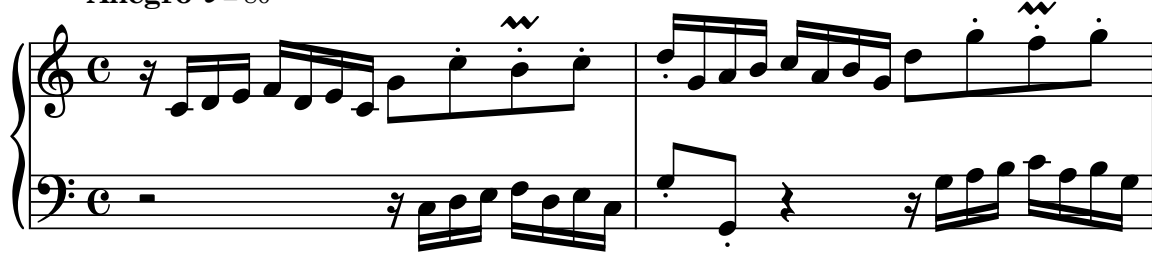
Invenzione n.1

Dalle Invenzioni a 2 voci

J.S.Bach



Allegro ♩ = 80



2
11

The musical score for 'The Rose Tree' is presented in two systems. The first system consists of two staves. The upper staff is in treble clef with a key signature of one sharp (F#) and a common time signature (C). It contains a melody of eighth and quarter notes, with a final half note. The lower staff is in bass clef with a key signature of one flat (Bb) and a common time signature (C). It contains a bass line of eighth and quarter notes. The second system also consists of two staves. The upper staff continues the melody from the first system. The lower staff continues the bass line, ending with a double bar line and a repeat sign.

Example 15 shows measures 15 and 16. Measure 15 features a treble clef with a key signature of one flat and a common time signature. The melody consists of eighth and sixteenth notes, with a half note rest. The bass line has a half note rest followed by eighth and sixteenth notes. Measure 16 continues the melody and bass line, with a half note rest in the treble and eighth and sixteenth notes in the bass.

Example 17 continues with measures 17 and 18. Measure 17 features a treble staff with a half note G4, an eighth note A4, and a quarter note B4, followed by a half note C5 and a quarter note D5. The bass staff has a half note E4, a quarter note F4, and a half note G4. Measure 18 features a treble staff with a half note E4, a quarter note F4, and a half note G4, followed by a half note A4 and a quarter note B4. The bass staff has a half note C5, a quarter note D5, and a half note E5. The key signature has one flat (Bb), and the time signature is 4/4.